

SR

SCANCLIMBER®

SLIDING DECK EXTENSION



SLIDING DECK EXTENSION

Mast climbing work platform expansion

SLIDING DECK EXTENSION

Scanclimber's Sliding Deck Extension (SDE) is a Mast Climbing Work Platform (MCWP) expansion, which is available for SC5000, SC6000 and SC8000 MCWP products. It is fully compatible with the existing Scanclimber mast climbers and standard platform sections mentioned above. SDE offers a new application and use opportunities to existing customers, who can use our products in ways that are both versatile and productive.

General

THE SCANCLIMBER SLIDING DECK EXTENSION transforms a standard mast climbing work platform in to a dynamically aligning platform that makes it easier and quicker to perform surface work on complex building facades. It moves up and down, like any other platform, but it also moves horizontally with several outreaching decks.

One or two platform levels, several independently moving decks

SC MCWP WITH SLIDING DECK EXTENSION (SDE) allows work on complex facades with several independently back and forth sliding platform decks (modules). Additionally you may have it with an additional working level fixed on top of the sliding deck extension. Two level version decks can also slide back and forth independently.

Sliding Deck reach

THE INDEPENDENTLY MOVING DECKS can slide 1.6 m outwards from the main platform. If a Sliding Deck Extension is equipped with an upper deck level, it moves along with the lower deck.



Decks move using electric motors or manually

THE MOVEMENTS of the deck modules are controlled by motorized drive units using pendant remote control or manually. There is a separate drive unit for every deck module. If the platform is equipped with two levels, the upper level platform modules move with the main decks.

Suitability

THE SLIDING DECK EXTENSION platform is well suited for work on complex building surfaces, where there is a need to work on facades or high horizontal surfaces with protruding obstructions.

Modularity

SDE IS A MODULAR SYSTEM, which can be built to fit complex facade work. The number and width of decks is a dynamic factory option; this means that the customer can decide the number of moving decks before ordering the product.

THE WIDTH OF THE DECK MODULES on both platform levels can be manufactured according to customer needs. Also the number of decks can vary. SDE expansion is available on Scanclimber's MCWP models: SC5000, SC6000 and SC8000.

THE MCWP CAN BE INSTALLED in one position and moved both vertically and horizontally during the work process.

Advantages:

- ability to adjust the platform front reach partially and steplessly whilst in the air and in complete safety
- provide work access on buildings with facade overhangs and offsets
- small set up ground area allows use in congested environments
- Low-weight components do not require special transport or craneage
- Robust design, materials and manufacture allow freedom of use in demanding/ harsh conditions
- fast erection and dismantling massively reduce overall production downtime.

SLIDING DECK EXTENSION

Mast climbing work platform expansion

MCWP EXPANSION SLIDING DECK EXTENSION

Example case: at Amager Bakke, Denmark

SCANCLIMBER SC6000 PLATFORMS with Sliding Deck Extensions are used at Amager Bakke waste to energy plant facade installations in Copenhagen, Denmark. Amager Bakke will be the world's most modern and environmentally friendly waste-to-energy plants with multifunctional industrial architecture with recreational areas. A new waste treatment plant aims to provide Copenhagen with more efficient energy production in recreational surroundings with a ski slope and a vantage point at the top.

AMAGER BAKKE IS DESIGNED as a hill where the roof surface is made available to the public. With its 85 meters in height, Amager Bakke will become Copenhagen's largest 'mountain' and constitute a significant landmark for the city. On the roof surface townspeople and visitors can have the opportunity to practise mountain and sports activities such as skiing (year-round), running and hiking.

THAT IS WHY THE BUILDING will be covered by 1500 meters of green, blue and black pistes for ski buffs, while less action-craving visitors can enjoy the view from the vantage platform at the top of the 85-meter-high building.

SIPRAL, A CZECH PREFABRICATED FACADE PRODUCER, applied the Scanclimber Sliding Deck Extensions together with several SC6000 mast climbing platforms to perform demanding facade work at Amager Bakke.

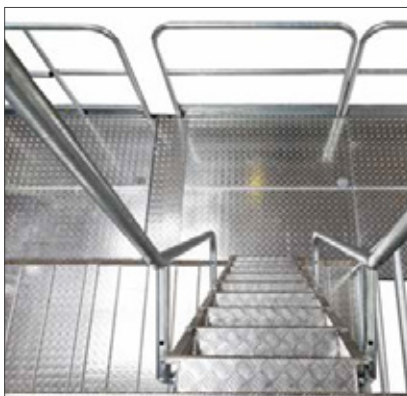


They used several SC6000 mast climbers with Sliding Deck Extensions to assemble pre-fabricated facade elements all the way up to a height of 85 meters. The prefabricated facade elements can be assembled from top to bottom along the full length of the platform once it is erected.

This was possible since each of the decks can be moved independently and aligned to the building's complex surface, regardless of the height at which the platform is positioned.

Compatibility

THE SLIDING DECK EXTENSION fits well into the Scanclimber product range since it is fully compatible with existing SC5000, SC6000 and SC8000 products. It offers a new application and use opportunities to existing customers, who can use our products in ways that are both versatile and productive.



Technical Data - Sliding Deck Extension

SC6000

Maximum platform length	19.0 m
Maximum platform width	3.4 m
Lifting speed	11.3m/min
Payload	1100 kg
Platform height at the lowest position	1.55 m
Electric system	
- lifting motors	4 x 4.0 kW
- power supply	400 VAC, 50 Hz



Scandlimer is the world's technology leader in mast climbing equipment for both temporary and permanent installations. The company has its corporate head office in Pirkkala, Finland and manufacturing in Gniezno, Poland. The company employs more than 200 staff in Europe and Asia. Scandlimer creates value for its customers with high quality, reliable and flexible vertical access solutions.

21-29 West Circuit,
Sunshine West,
3020 VIC, AUSTRALIA

P. +61 3 9312 6497
E. sales@scanrent.com.au
www.scanrent.com.au

